



# Cabins and Houses at Lone Mountain Ranch

Tucked into the forested hills of Big Sky, the log cabins of Lone Mountain Ranch offer a timeless mountain retreat. Many have stood for generations and have been thoughtfully restored, blending rustic craftsmanship with refined details — wood-burning stoves, vintage vinyl record players, handwoven textiles, and artisan furnishings. From intimate one-bedroom hideaways to expansive family lodges, each space is designed to immerse you in the quiet luxury of the West. Whether blanketed in snow or framed by summer wildflowers, every season invites you to step outside to sweeping wilderness views—then return to the glow of the fire as the Montana sky fades into stars.

LMR CABINS: ROOM MATRIX

Bed Configuration		Bath Configuration	Fireplace or Wood Burning Stove	Sleeps Comfortably	Sleeps Up To	# of Bedrooms	Bathrooms
Chipmunk	1 Queen Bed	Shower	Wood Burning Stove	2	2	1	1
Porcupine	1 Queen Bed	Tub Shower	Wood Burning Stove	2	2	1	1
Meadowlark	1 Queen Bed	Shower	Wood Burning Stove	2	2	1	1
Blue Spruce	1 King Bed	Soaking Tub & Shower	Wood Burning Stove	2	2	1	1
Lodgepole	1 King Bed	Soaking Tub & Shower	Wood Burning Stove	2	2	1	1
Pine Martin	1 King Bed	Soaking Tub & Shower	Wood Burning Stove	2	2	1	1
Bald Eagle	1 King Bed	Tub Shower	Wood Burning Stove	2	2	1	1
Rainbow	1 King Bed	Shower	Wood Burning Stove	2	2	1	1
Grayling	1 King Bed	Tub Shower	Wood Burning Stove	2	2	1	1
Blackbear	1 King Bed & 1 Twin Day Bed	Tub Shower	Fireplace	2	3	1	1
Cougar	1 King Bed & 1 Twin Day Bed	Soaking Tub & Shower	Wood Burning Stove	2	3	1	1
Lamedeer	1 King Bed & 1 Twin Day Bed	Tub Shower	Wood Burning Stove	2	3	1	1
Canyon	1 King Bed & 1 Twin Day Bed	Shower	Fireplace	2	3	1	1
Bitterroot	1 King Bed & 1 Queen Sleeper Sofa	Shower	Wood Burning Stove	2	4	1	1
Ouzel	1 King Bed & 1 Queen Sleeper Sofa	Soaking Tub & Shower	Wood Burning Stove	2	4	1	1
Bullmoose	1 King Bed & 1 Queen Sleeper Sofa	Soaking Tub & Shower	Fireplace & Wood Burning Stoves	2	4	1	1
Shooting Star	1 King Bed, 2 Bunk Beds & 1 Queen Pull-out	Soaking Tub & Shower	Wood Burning Stoves	4	6	1	2
Bighorn	2 King Beds & 1 Queen Sleeper Sofa	Soaking Tub & Shower	Wood Burning Stove	4	6	2	2
Larkspur	2 King Beds & 1 Queen Sleeper Sofa	Soaking Tub & Shower	Fireplace & Wood Burning Stove	4	6	2	2
Aspen	2 King Bed & 1 King Pull Out	Soaking Tub & Shower	Fireplace & Wood Burning Stoves	4	6	2	2
Coyote	2 King Beds & 1 Queen Sleeper Sofa	Soaking Tub & Shower	Wood Burning Stove	4	6	2	2
Hilltop	2 King Beds & 1 Twin Day Bed	Soaking Tub & Shower	Fireplace & Wood Burning Stove	4	5	2	2
Douglas Fir	3 Queen Beds & 4 Twin Beds	Tub Showers	Wood Burning Stove	10	10	4	2
B-K	2 King Beds, 1 Twin Day Bed, 2 Twin Beds, 1 Twin Bunk & 1 Full Bunk	Soaking Tub & Shower	Fireplace	6	9	3	3
Ridgetop	5 King Beds, 1 Queen Bed & 6 Twin Beds	Tub Showers	Fireplaces	12	18	6	8
Bison Lodge	5 King Beds + 6 Bunk Beds	Soaking Tub & Shower	Fireplaces	16	16	6	5
Property Buyout				100	130	46	46

LMR CABINS: PROPERTY MAP

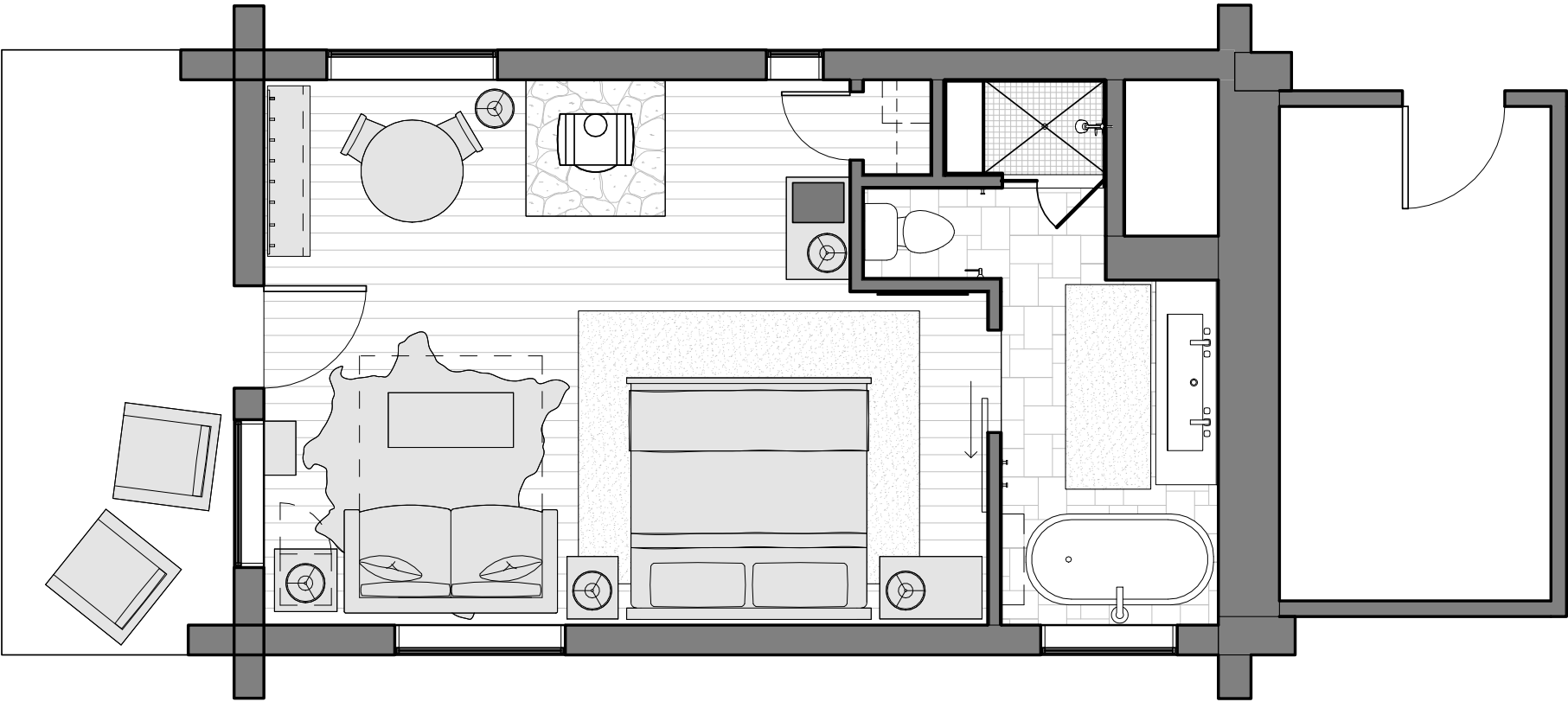


LMR CABINS: ONE BEDROOMS

# Ouzel

1 BEDROOM | 1 BATHROOM | SLEEPS 4

Named for North America’s only aquatic songbird, this one-bedroom cabin is perfect for nesting. Unwind in style in the claw-foot tub or by the wood stove. Enjoy the luxury of the king-sized bed, queen sleeper sofa, sitting area, or full bath with walk-in tile shower. You’ll be singing this cabin’s praises for years to come!

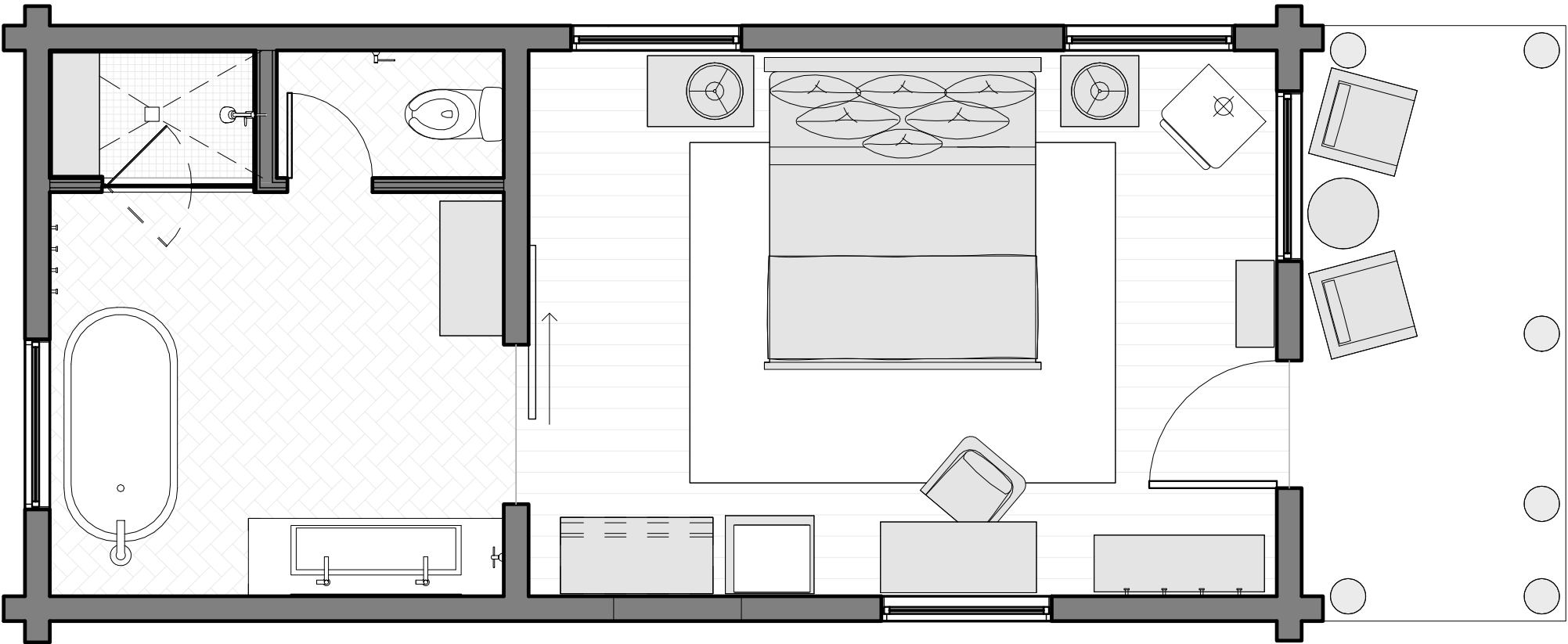


LMR CABINS: ONE BEDROOMS

# Pine Marten

1 BEDROOM | 1 BATHROOM | SLEEPS 2

This large one-bedroom cabin, tucked just between the lodgepole pines, is the perfect home for your treasured time in Big Sky. Named after the agile and playful Pine Marten, the cabin features a king-sized bed, wood stove, sitting area, expansive bath with walk-in tile shower, and front porch with views of North Fork creek.

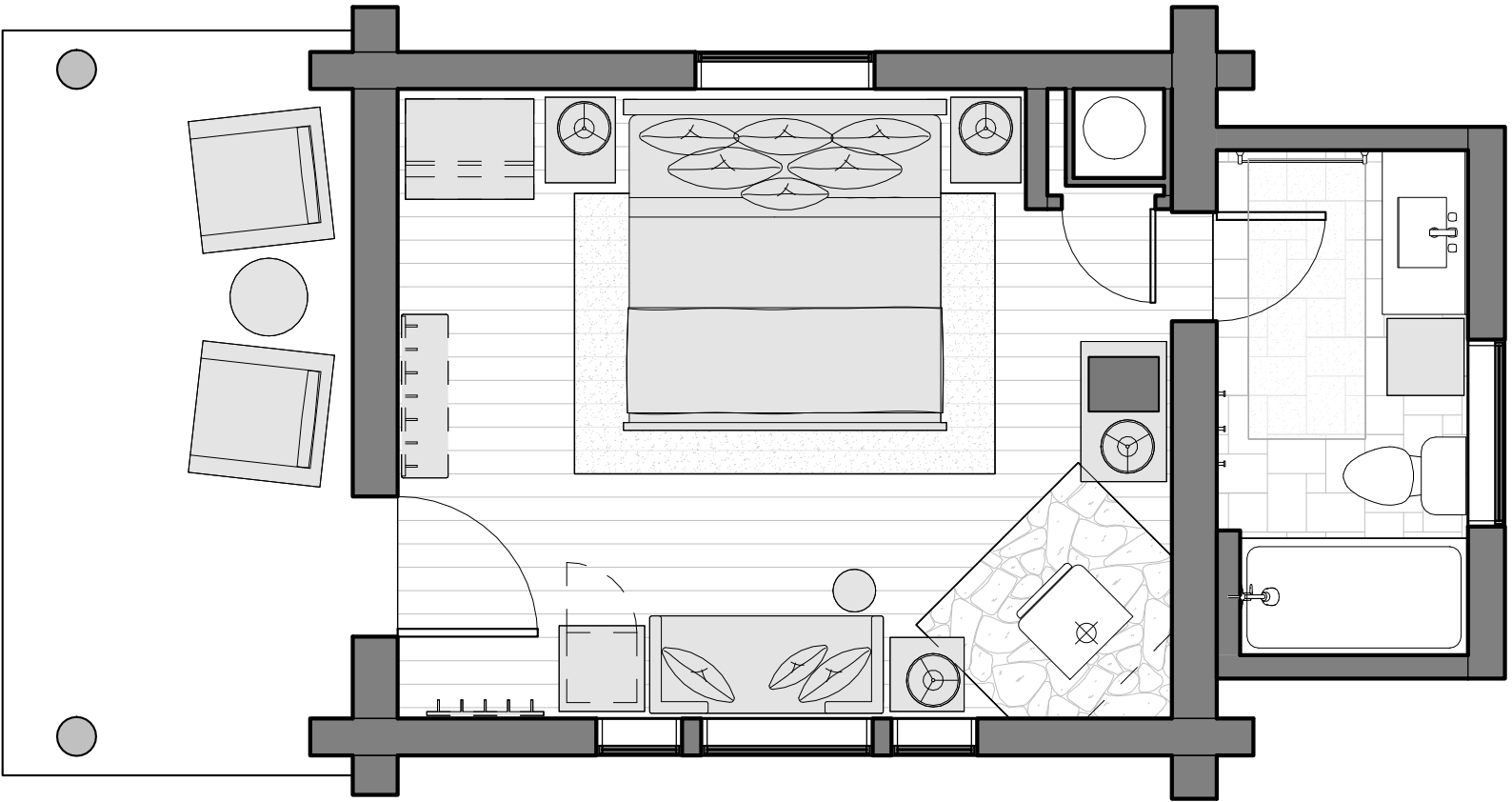


LMR CABINS: ONE BEDROOMS

# Bald Eagle

1 BEDROOM | 1 BATHROOM | SLEEPS 2

Relax and take in the ranch life with this breezy, one-room bedroom log cabin with a king-sized bed, sitting area, wood stove, and full bath. Originally known as the “Bath House,” the Bald Eagle rests on the shore of the North Fork Creek – an ideal location to feel the soft breeze through the windows or get lost in the sound of the nearby running waters all year long.

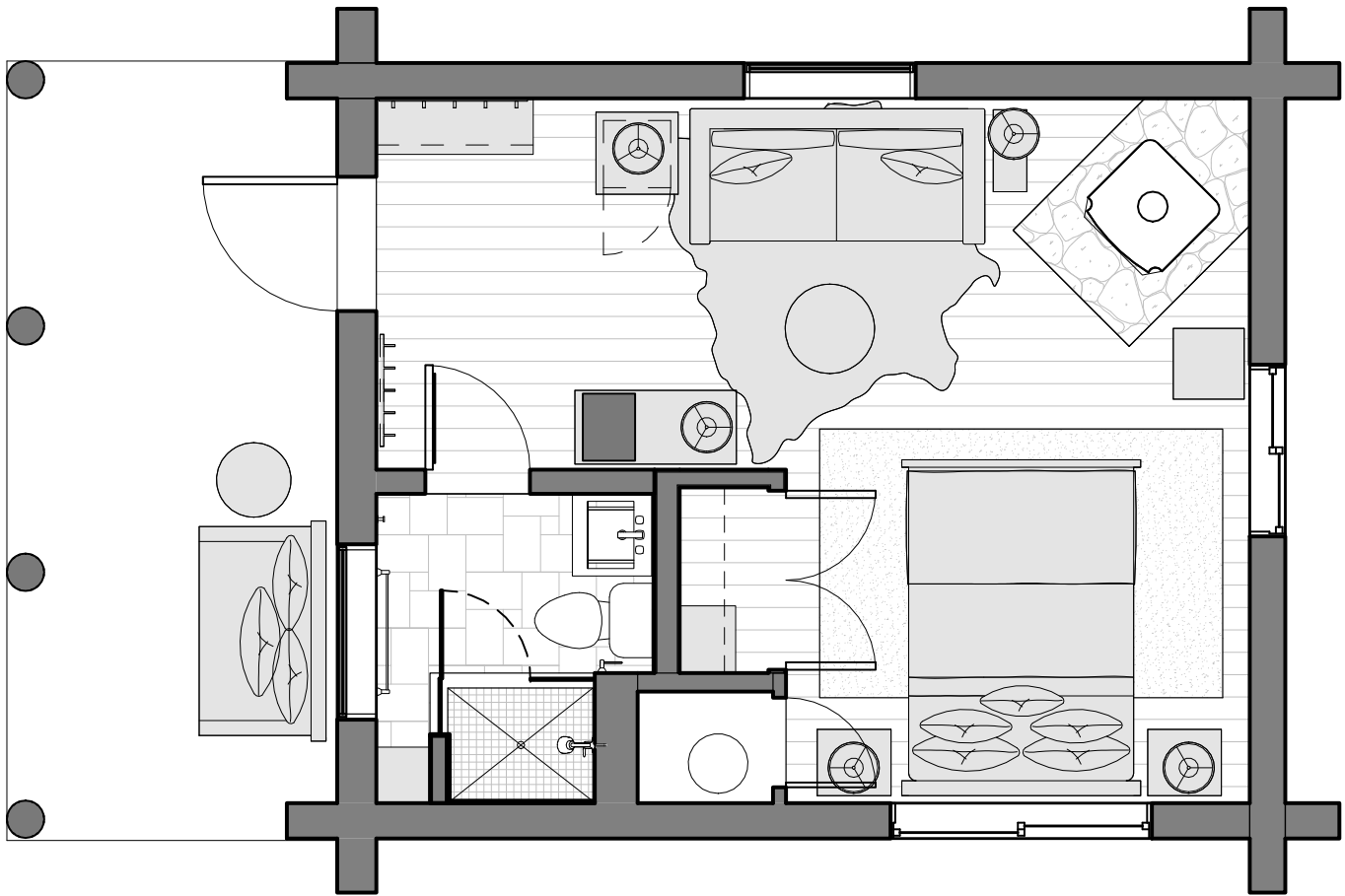


LMR CABINS: ONE BEDROOMS

# Meadowlark

1 BEDROOM | 1 BATHROOM | SLEEPS 2

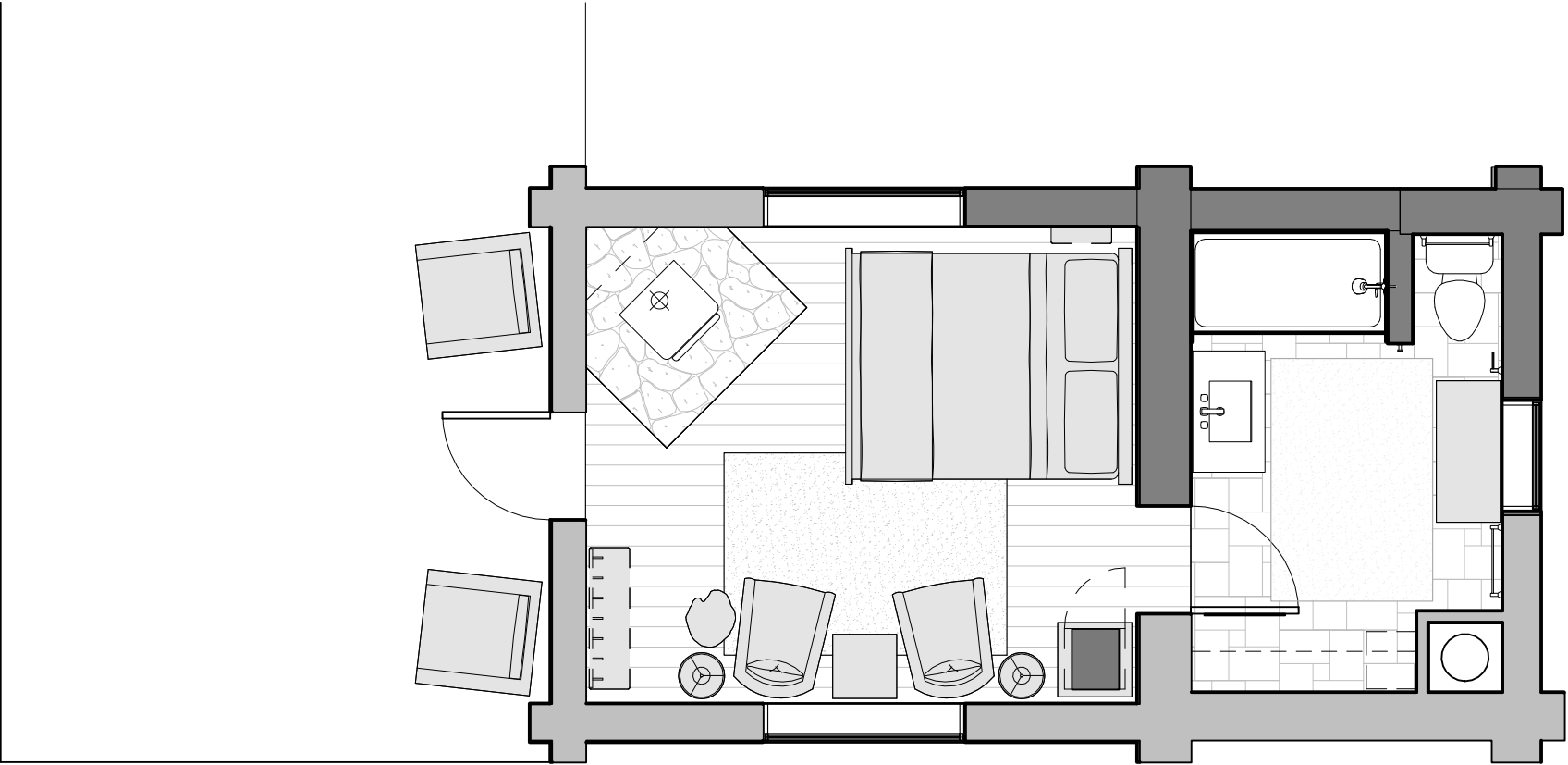
Nearly a century old, Meadowlark was the original “Gatekeeper’s Cabin” for the ranch’s first caretakers. Its secluded location is perfect for those seeking a cozy, private experience and its decor strikes a balance between modern comfort and authentic ranch surroundings (featuring a porch with a wooden swing, queen bed, wood stove, and full bath with walk-in tile shower).



# Porcupine

1 BEDROOM | 1 BATHROOM | SLEEPS 2

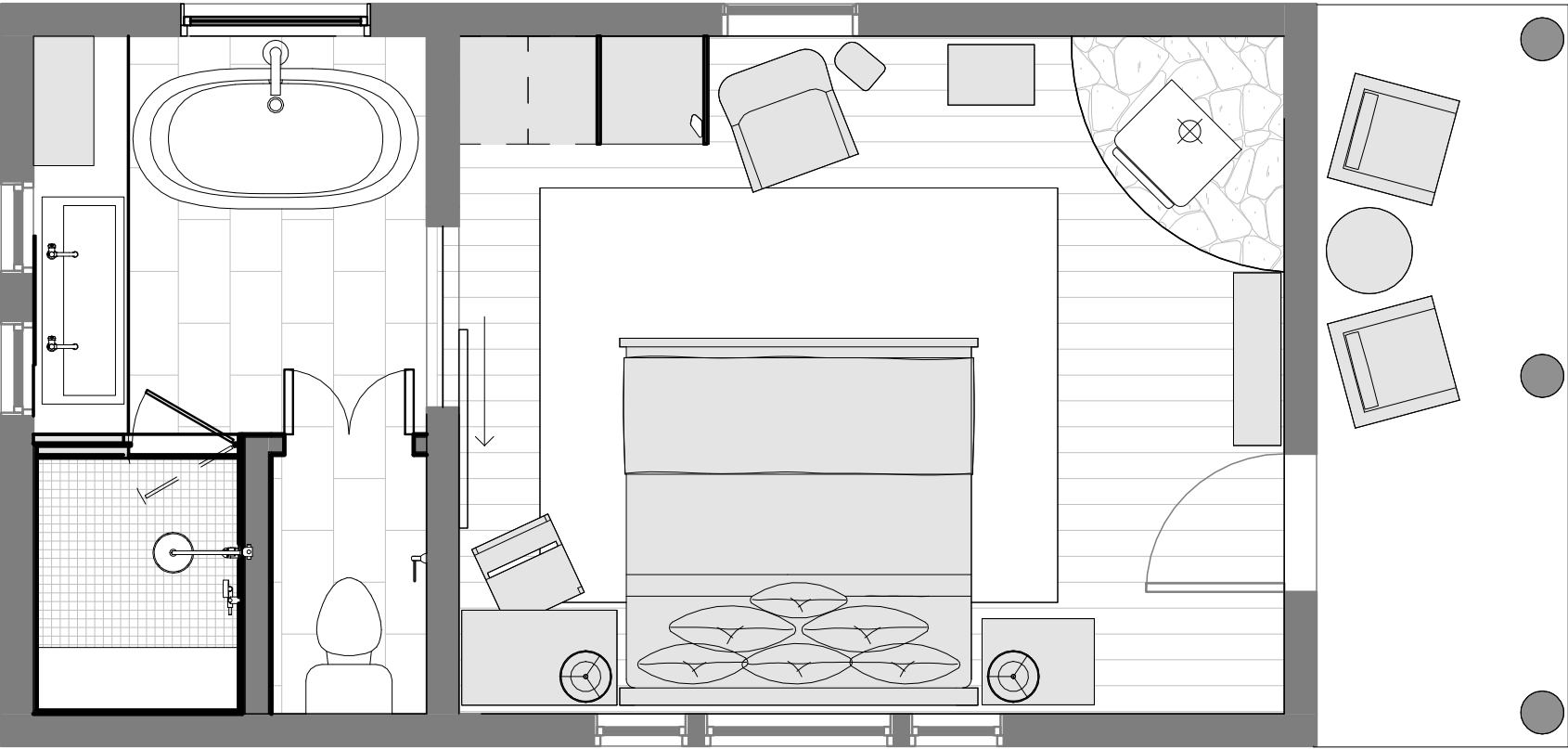
Known originally as the ranch’s “Ice House,” Porcupine was built in 1920s. Its rustic floors, rich fabrics, queen bed, sitting area, wood stove, and full bath deliver enough warmth to melt its former reputation. Admire the North Fork Creek from the Porcupine’s shared deck.



# Lodgepole

1 BEDROOM | 1 BATHROOM | SLEEPS 2

Whether you're on a romantic getaway or on a solo journey, enjoy views of the eastern mountains or the ranch property from the porch of Lodgepole. This cabin features the essentials you need to relax and unwind, including a King bed, a wood stove, a desk for journaling, and full bath including a separate soaking tub and shower.

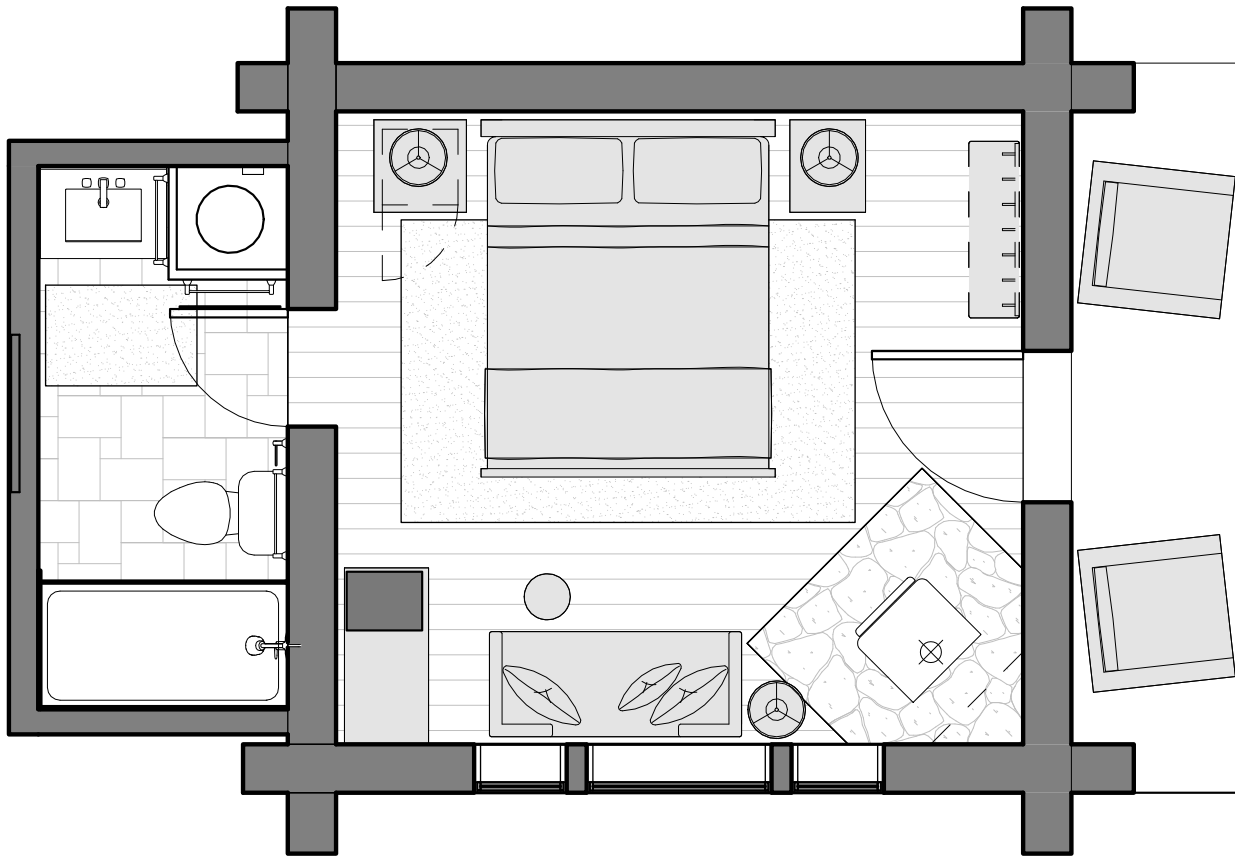


LMR CABINS: ONE BEDROOMS

# Chipmunk

1 BEDROOM | 1 BATHROOM | SLEEPS 2

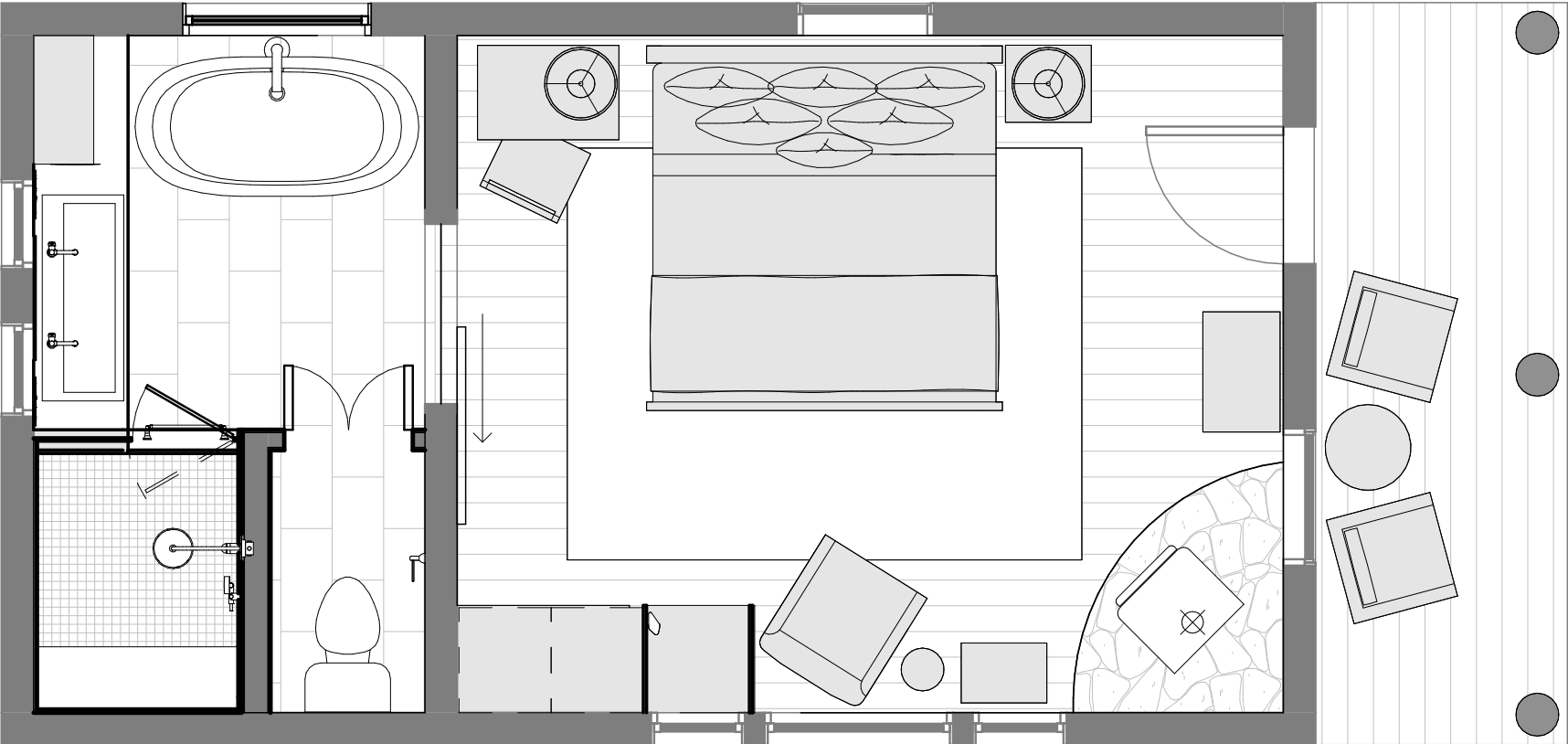
Built from lodgepole pine in 1927, Chipmunk was the ranch’s original “Cook’s Cabin.” Though no longer the chef’s hub, this cabin’s shared deck is ideal for curling up with your favorite snack and listening to the nearby North Fork Creek. Chipmunk features a queen bed, sitting area, wood stove, and full bath with a tub and shower.



# Blue Spruce

1 BEDROOM | 1 BATHROOM | SLEEPS 2

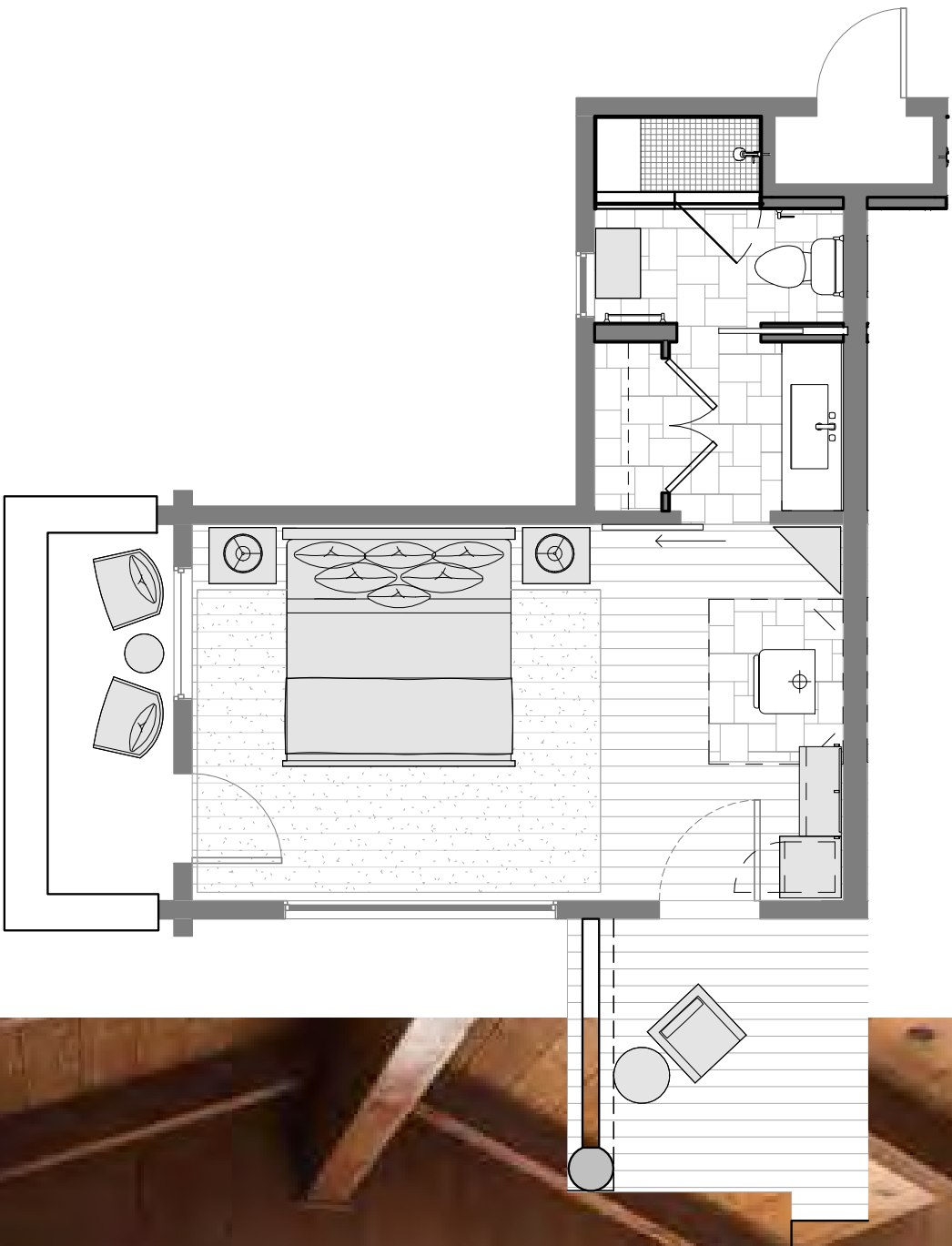
Tucked away in the trees beside the North Fork creek, this one-room cabin features a king bed, a lovely desk, a wood stove, and a full bath including claw foot tub. The Blue Spruce is ideal for a single guest, or a couple. The shaded front porch offers the perfect place to relax throughout the day.



# Rainbow

1 BEDROOM | 1 BATHROOM | SLEEPS 2

This cabin combines a convenient location with a breathtaking view. Admire Yellow Mountain from the shared patio. Relax and cozy up in this Rainbow Cabin which features a king bed, full bath, wood stove, and private side patio.

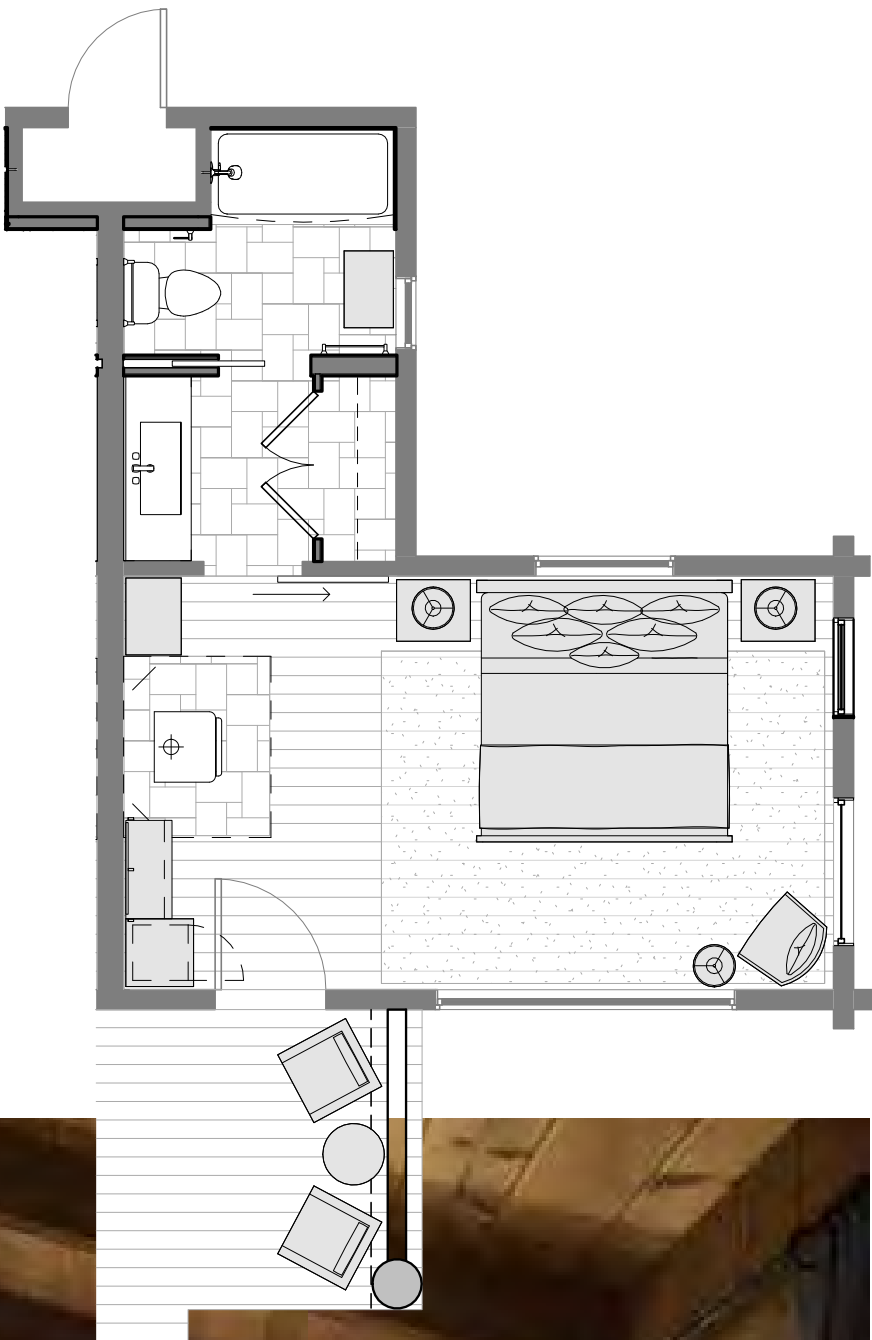


LMR CABINS: ONE BEDROOMS

# Grayling

1 BEDROOM | 1 BATHROOM | SLEEPS 2

This cabin combines a convenient location with a breathtaking view. Admire Yellow Mountain from the shared, covered porch or grab a local brew at the nearby Lodge or Saloon. This cabin features a king bed, full bath, and wood stove.

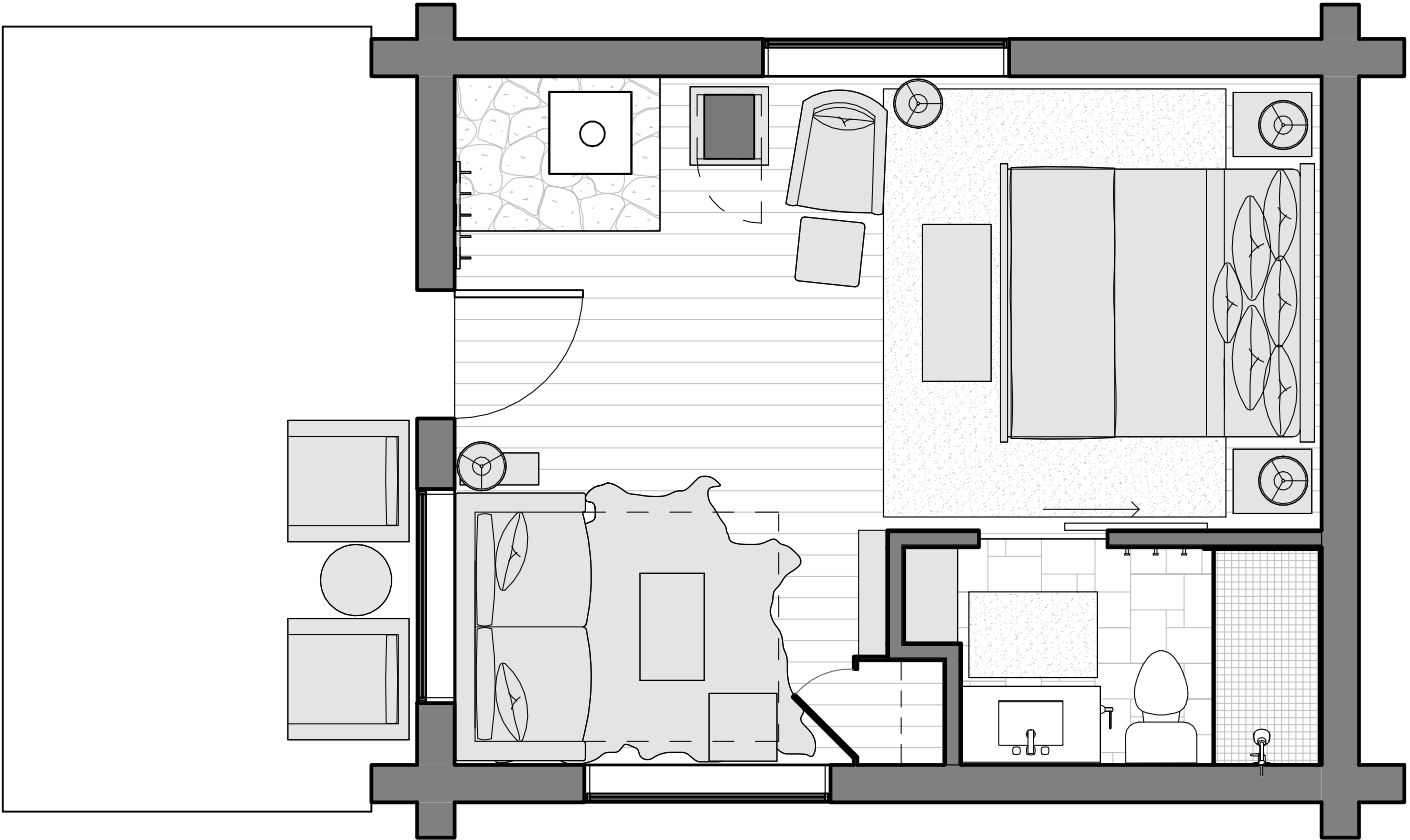


LMR CABINS: ONE BEDROOMS

# Bitterroot

1 BEDROOM | 1 BATHROOM | SLEEPS 4

This large one-bedroom cabin, tucked just behind the North Fork Creek between the lodgepole pines, will inspire your sense of adventure. Named after Lewis and Clark’s favorite wildflowers, the Bitterroot cabin features a spacious front porch, king-sized bed, queen sleeper sofa, wood stove, sitting area, and full bath with walk-in tile shower.

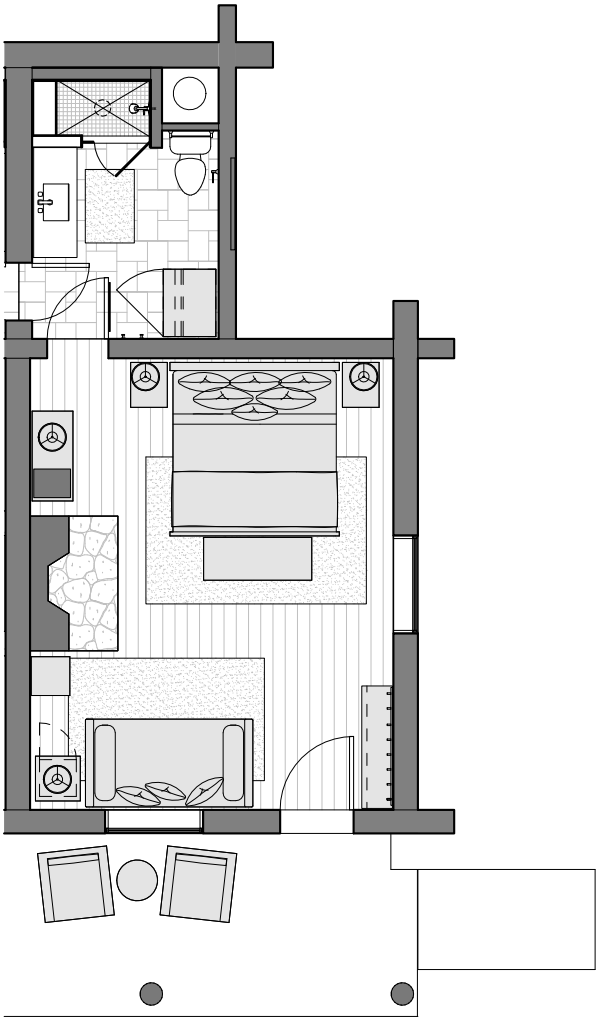


# Black Bear

1 BEDROOM | 1 BATHROOM | SLEEPS 3

A guest favorite, because of close proximity to Horn and Cantle this century-old cabin is perfect for a couple or family of three. Black bear features a king-sized bed, twin daybed, and full bath, and an original-stone fireplace.

*Can be connected to Cougar cabin to create a duplex for a larger family, additional charge.*

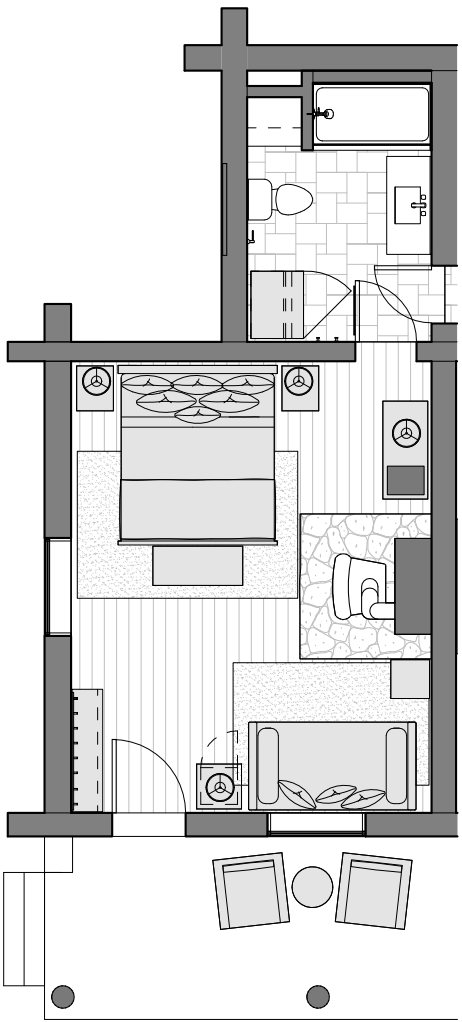


# Cougar

1 BEDROOM | 1 BATHROOM | SLEEPS 3

A guest favorite, because of close proximity to Horn and Cattle this century-old cabin is perfect for a couple or family of three. Cougar cabin features a king-sized bed, twin daybed, and full bath, and an pot belly stove.

*Can be connected to Black Bear cabin to create a duplex for a larger family, additional charge.*

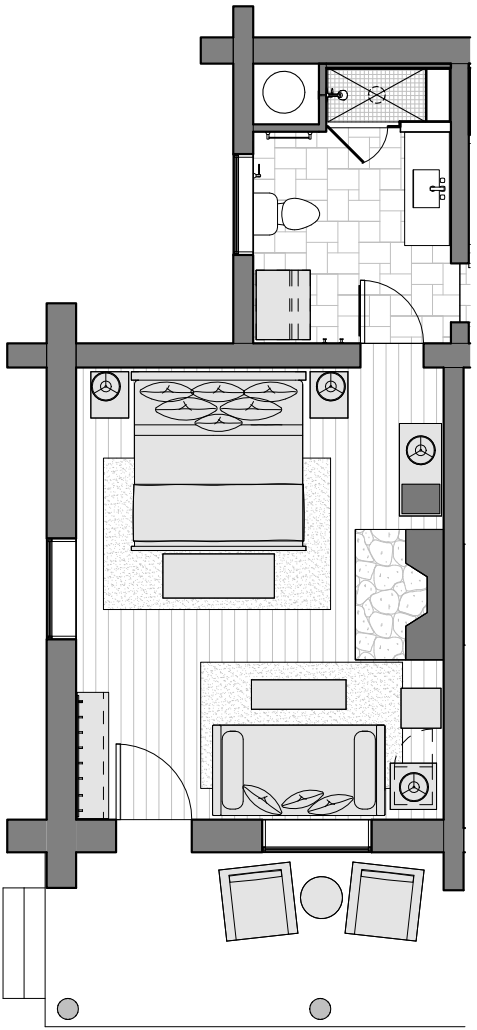


# Lame Deer

1 BEDROOM | 1 BATHROOM | SLEEPS 3

Built in 1927 from Lone-Pine-harvested pine, the Lame Deer is the definition of authentic mountain aesthetic, featuring a king-sized bed, twin daybed, full bath, and rustic wood floors. Canyon features its original stone fireplace, king-sized bed, twin daybed, and full bath with walk-in tile shower.

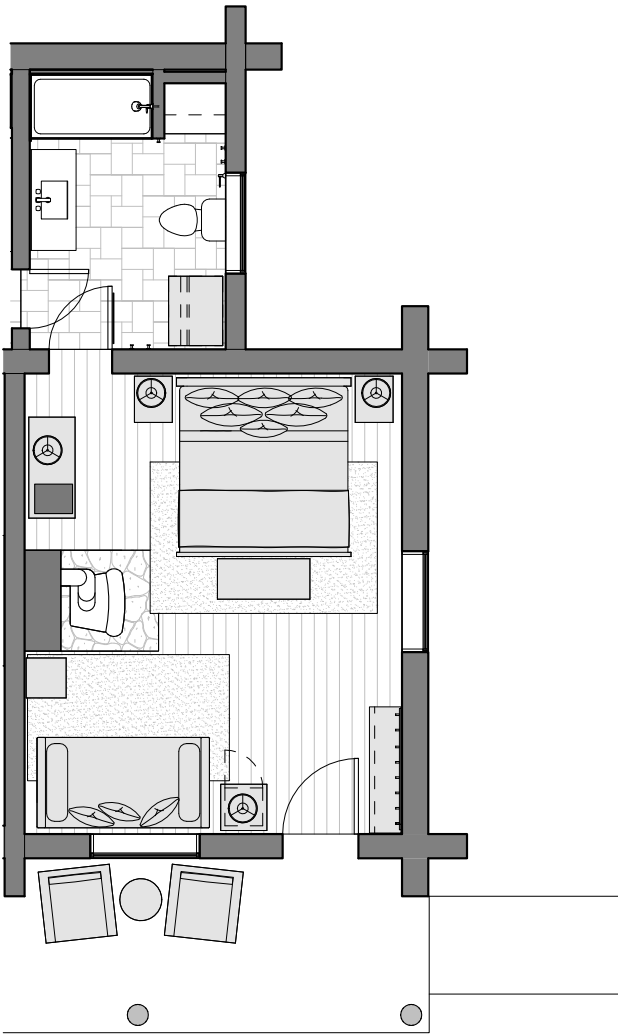
*Can be connected to Canyon cabin to create a duplex for a larger family, additional charge.*



# Canyon

1 BEDROOM | 1 BATHROOM | SLEEPS 3

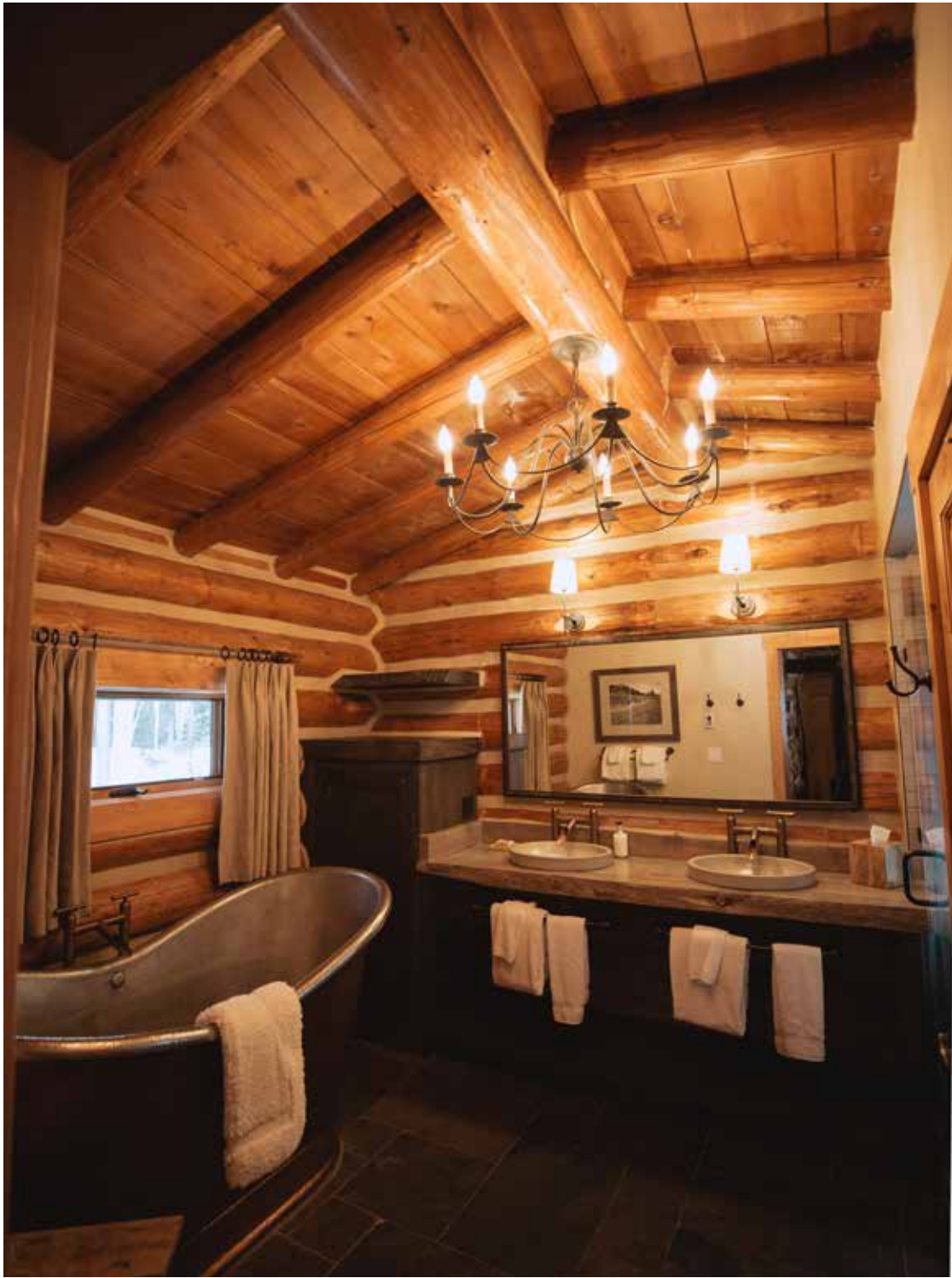
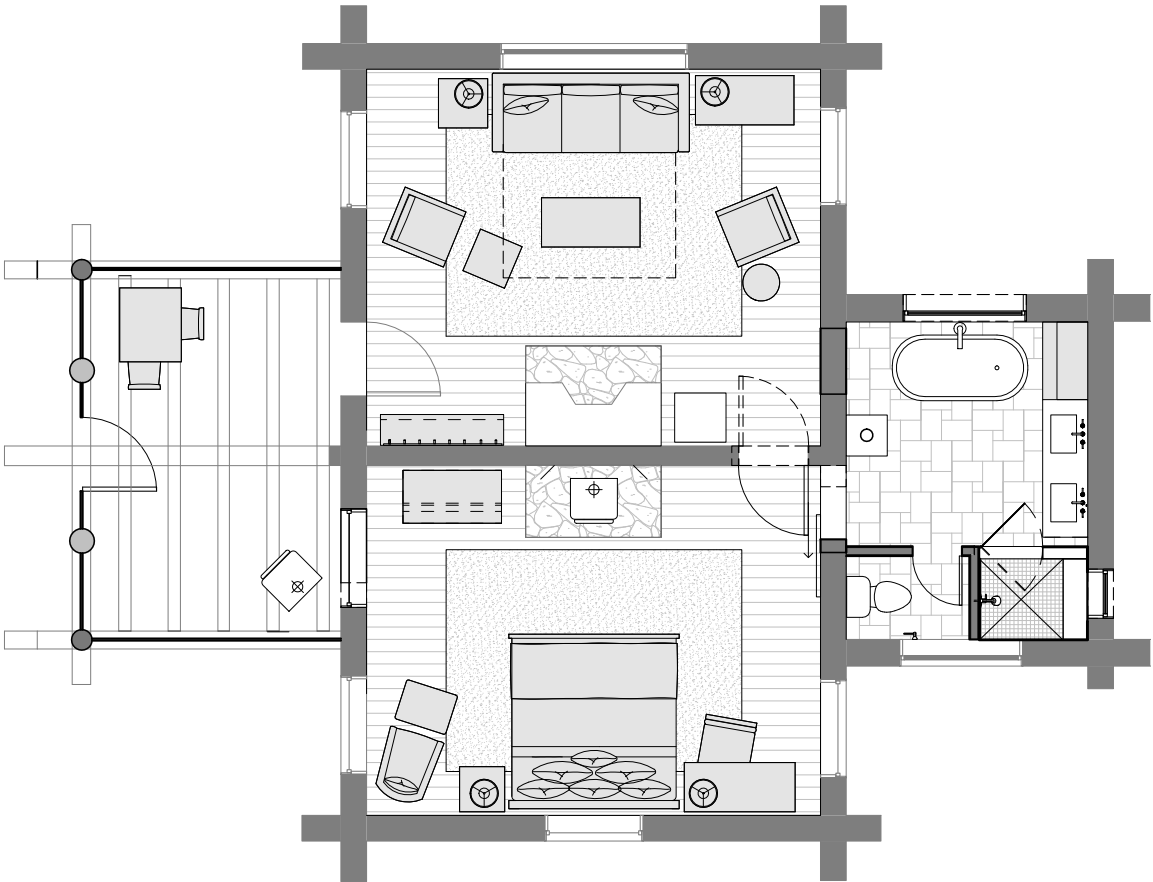
Built in 1927 from Lone-Pine harvested pine, the Canyon is the definition of authentic mountain aesthetic, featuring a king-sized bed, twin daybed, full bath, and rustic wood floors. Canyon features its original stone fireplace, king-sized bed, twin daybed, and full bath with walk-in tile shower. *Can be connected to Lame Deer cabin to create a duplex for a larger family, additional charge.*



# Bull Moose

1 BEDROOM | 1 BATHROOM | SLEEPS 4

Bull Moose is the perfect cabin for a small family, or a couple. This cabin features a large living room (including its original stone fireplace) and sitting area as well as a large bedroom with a king bed and a large patio with a wood stove. The living room sofa can be made into a queen size bed. Enjoy the view by watching the sunrise over the mountains!

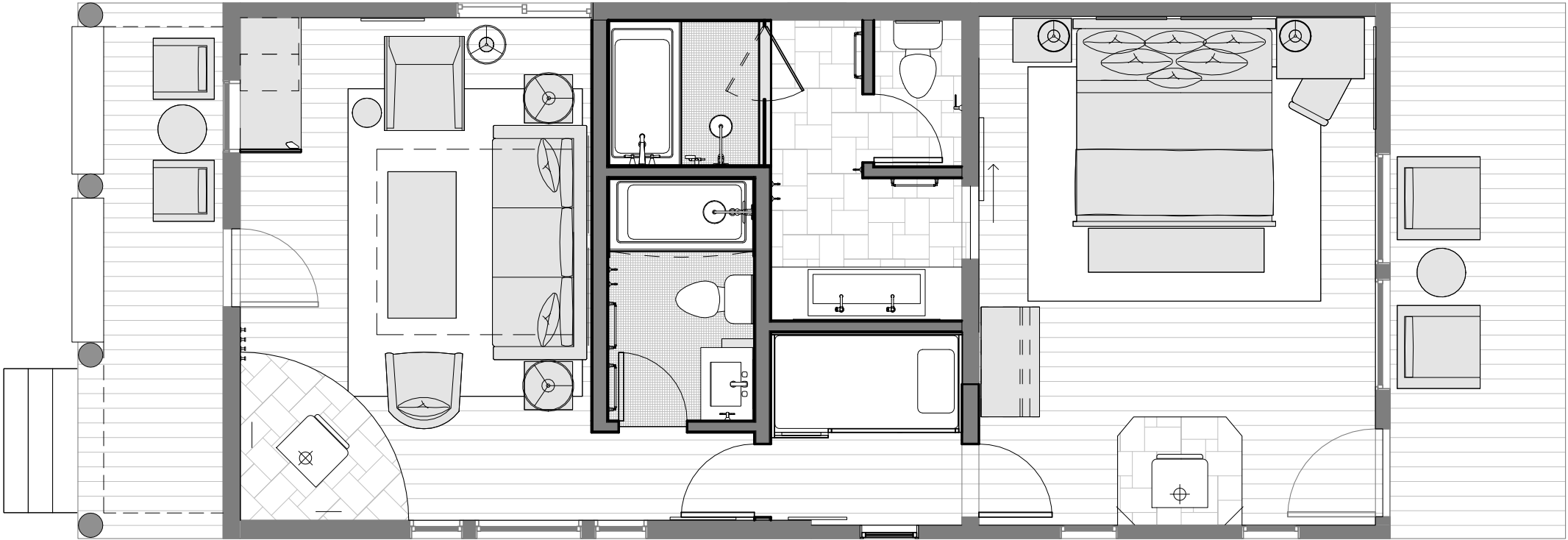


LMR CABINS: ONE BEDROOMS

# Shooting Star

1 BEDROOM | 2 BATHROOMS | SLEEPS 6

Shooting Star is the perfect cabin for a small family. This cabin features a master bedroom with a king bed and potbelly stove with en suite bathroom including soaking tub and separate shower. The master bedroom also includes a private porch overlooking the North Fork Creek. Cozy twin bunkbeds and full guest bath just outside the master are perfect for children of any age. A well-appointed cozy living room includes a comfortable pull out couch , pot belly stove, and porch with ranch views.

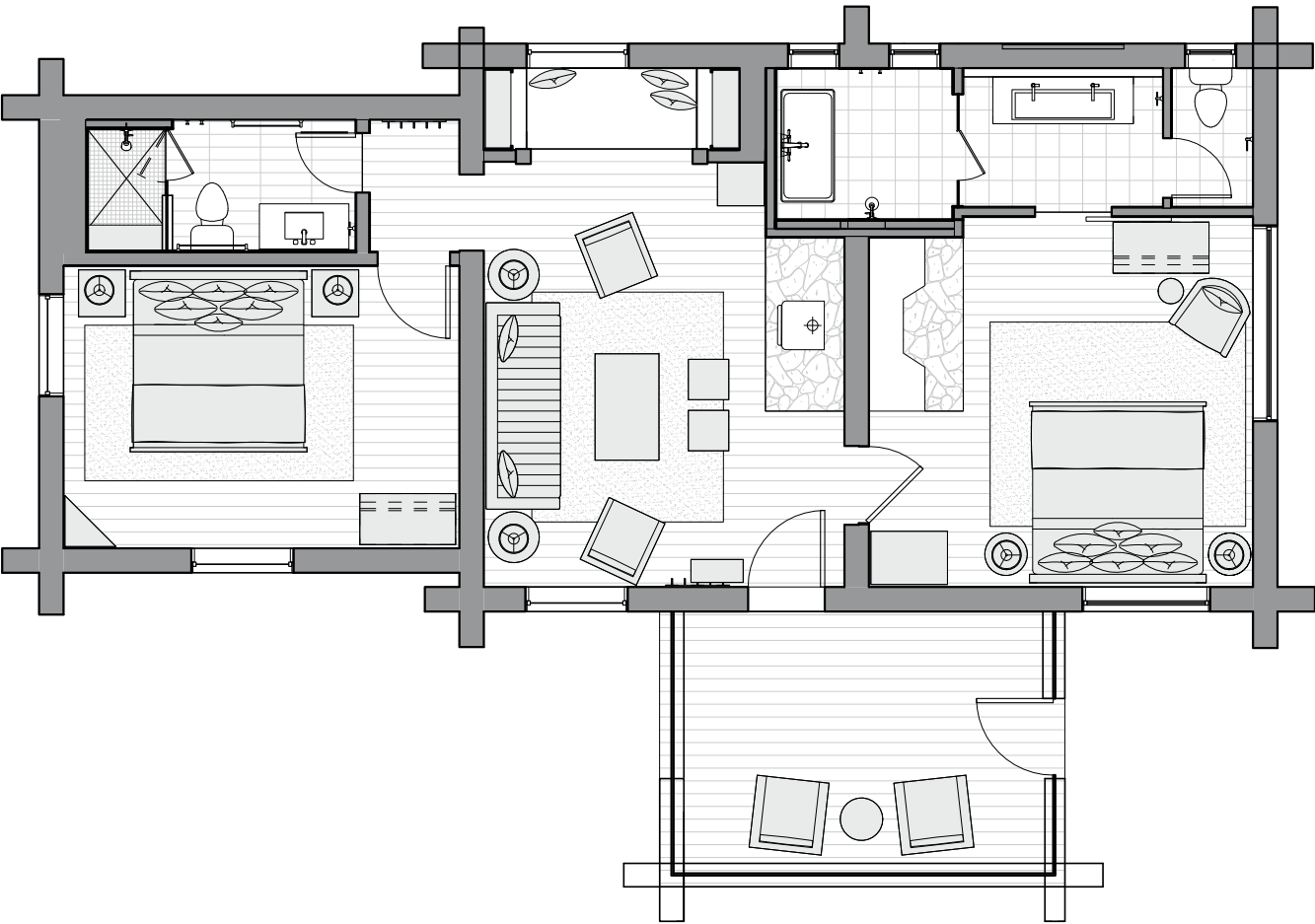


LMR CABINS: TWO BEDROOMS

# Hilltop

2 BEDROOMS | 2 BATHROOMS | SLEEPS 5

The Hilltop cabin has one of the most unique histories of any place on the ranch. Custom-built for one of the ranch’s original owners, all of its building materials were sourced from the ranch itself. With its gorgeous view of the ranch and surrounding mountains and screened-in porch, it’s no wonder that the Hilltop is a guest favorite! Inside the cabin, there is a spacious living room with wood burning stove and a single daybed. One bedroom features a king bed, rock fireplace, and full bath. The second bedroom includes a king bed and a soaking tub.

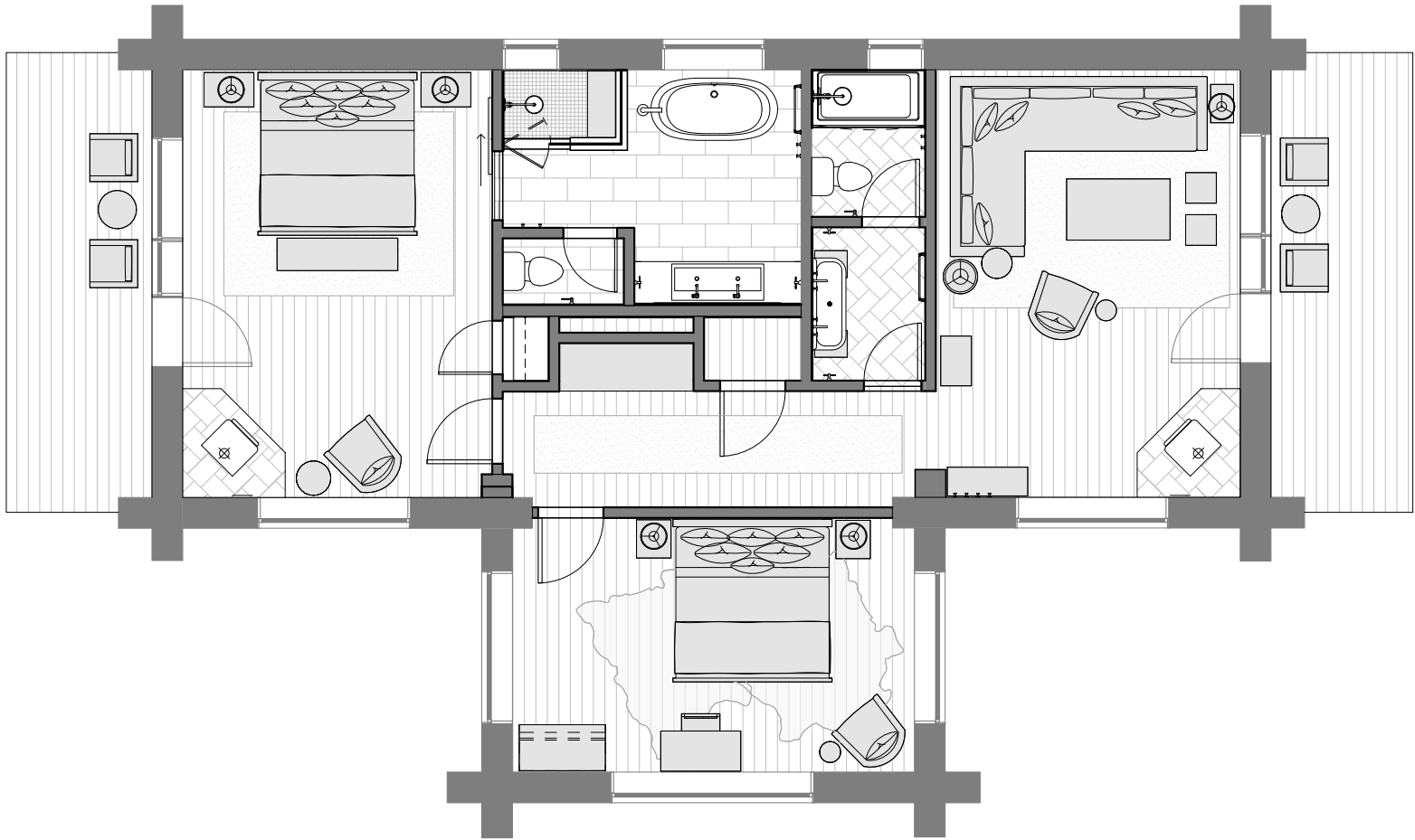


LMR CABINS: TWO BEDROOMS

# Aspen

2 BEDROOMS | 2 BATHROOMS | SLEEPS 6

This cozy cabin nestled on the knoll overlooking the ranch is a guest favorite! A master bedroom features a king bed, potbelly stove and master bath with a clawfoot tub and separate shower. A second bedroom includes a king bed and sweeping ranch views. A second full bathroom features tub/shower combination. A generous living room includes a large sectional couch featuring a king pullout bed, potbelly stove and views of swaying colorful Aspen trees.

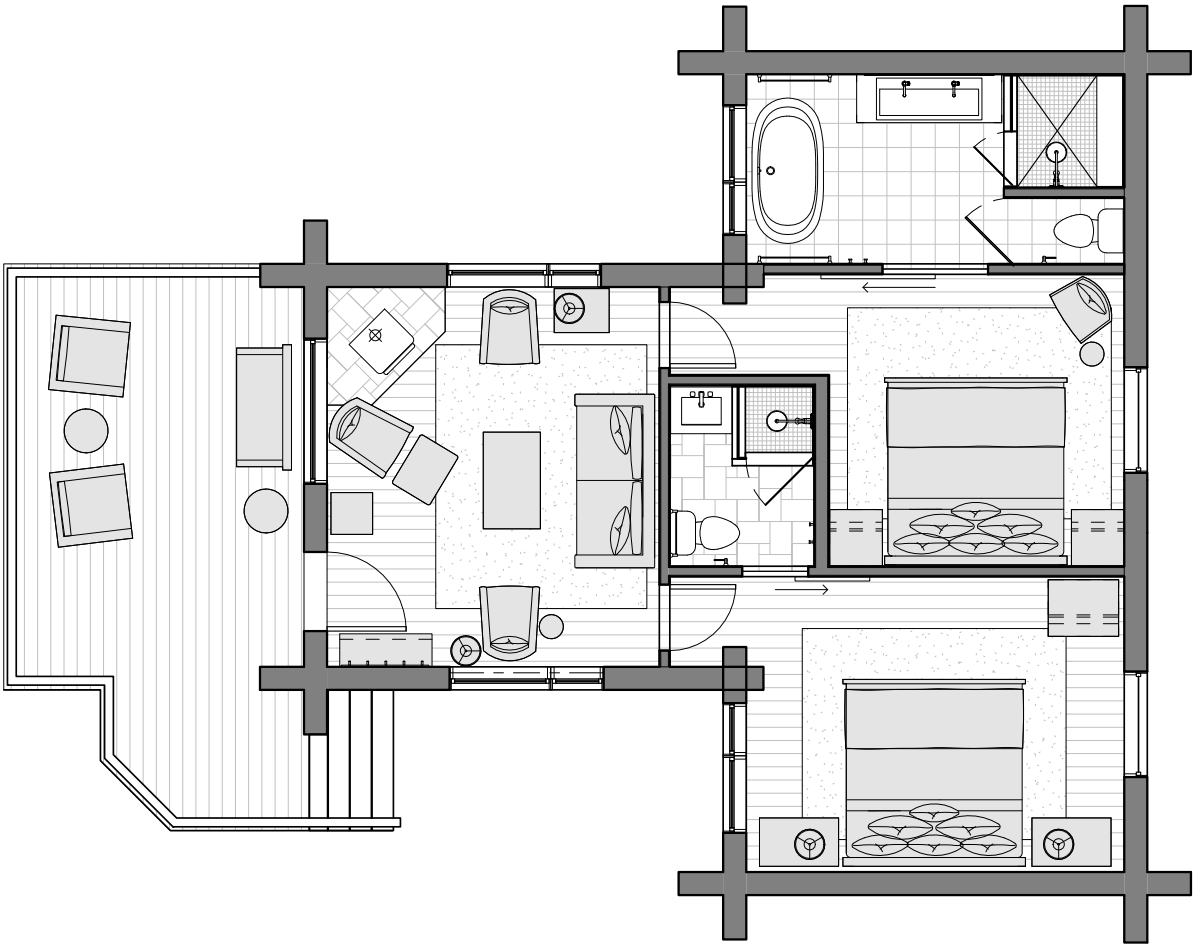


LMR CABINS: TWO BEDROOMS

# Bighorn

2 BEDROOMS | 2 BATHROOMS | SLEEPS 6

Located above the North Fork Creek, The Bighorn cabin is a rustic dream come true. Guests can relax on the wooden deck or in the living room beside the authentic wood stove. This cabin features two bedrooms – each with a king bed and one room with a full bath and the other with a soaking tub. The living room sofa can be made into a queen size bed.

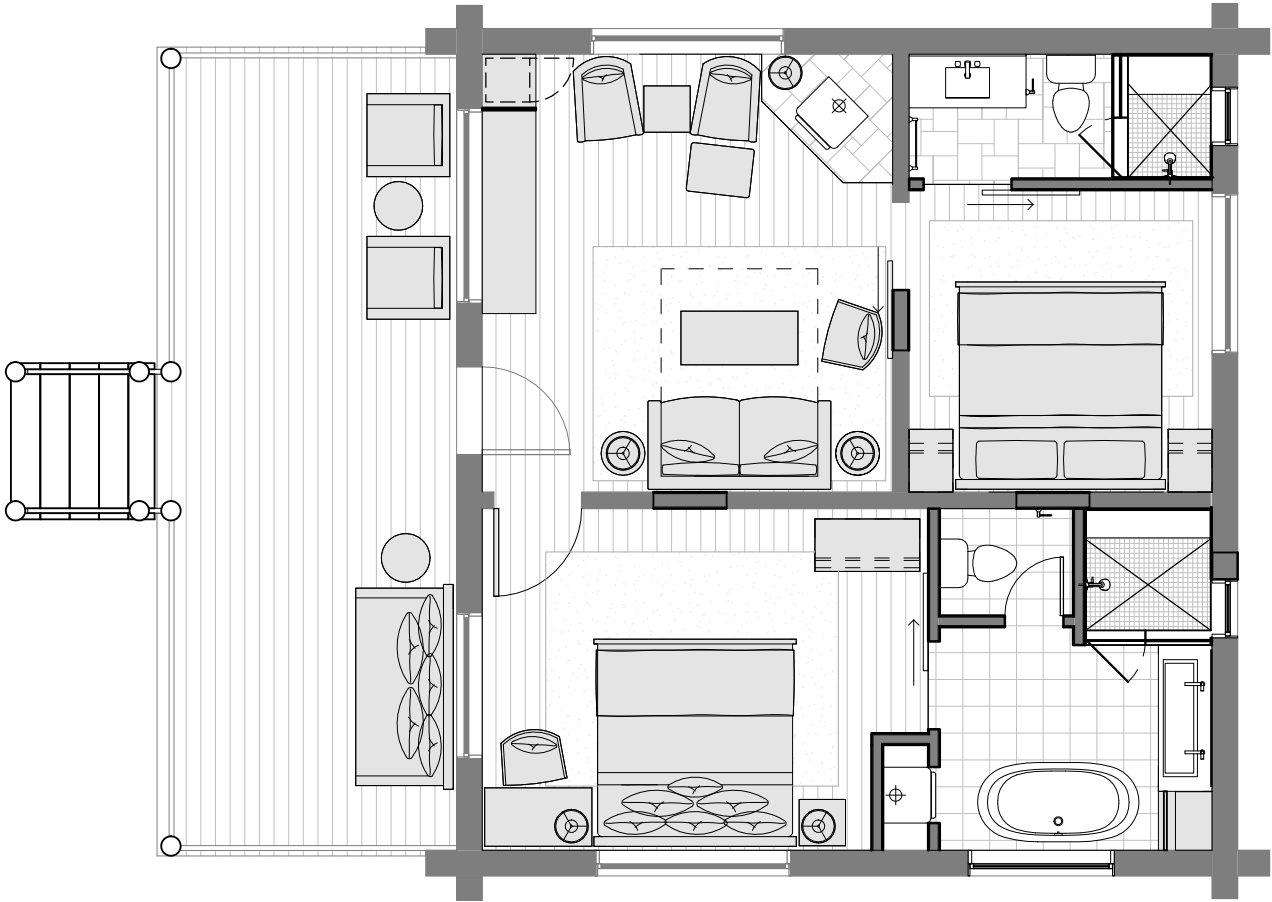


LMR CABINS: TWO BEDROOMS

# Coyote

2 BEDROOMS | 2 BATHROOMS | SLEEPS 6

The Coyote’s two bedrooms (each with a king bed and bathroom) and living room are perfect for a family or small group outing. Coyote also offers a pull out sofa sleeper. Admire the mountains and stream from the covered porch or spend quality time in the sitting area in the natural light, beside the wood stove.

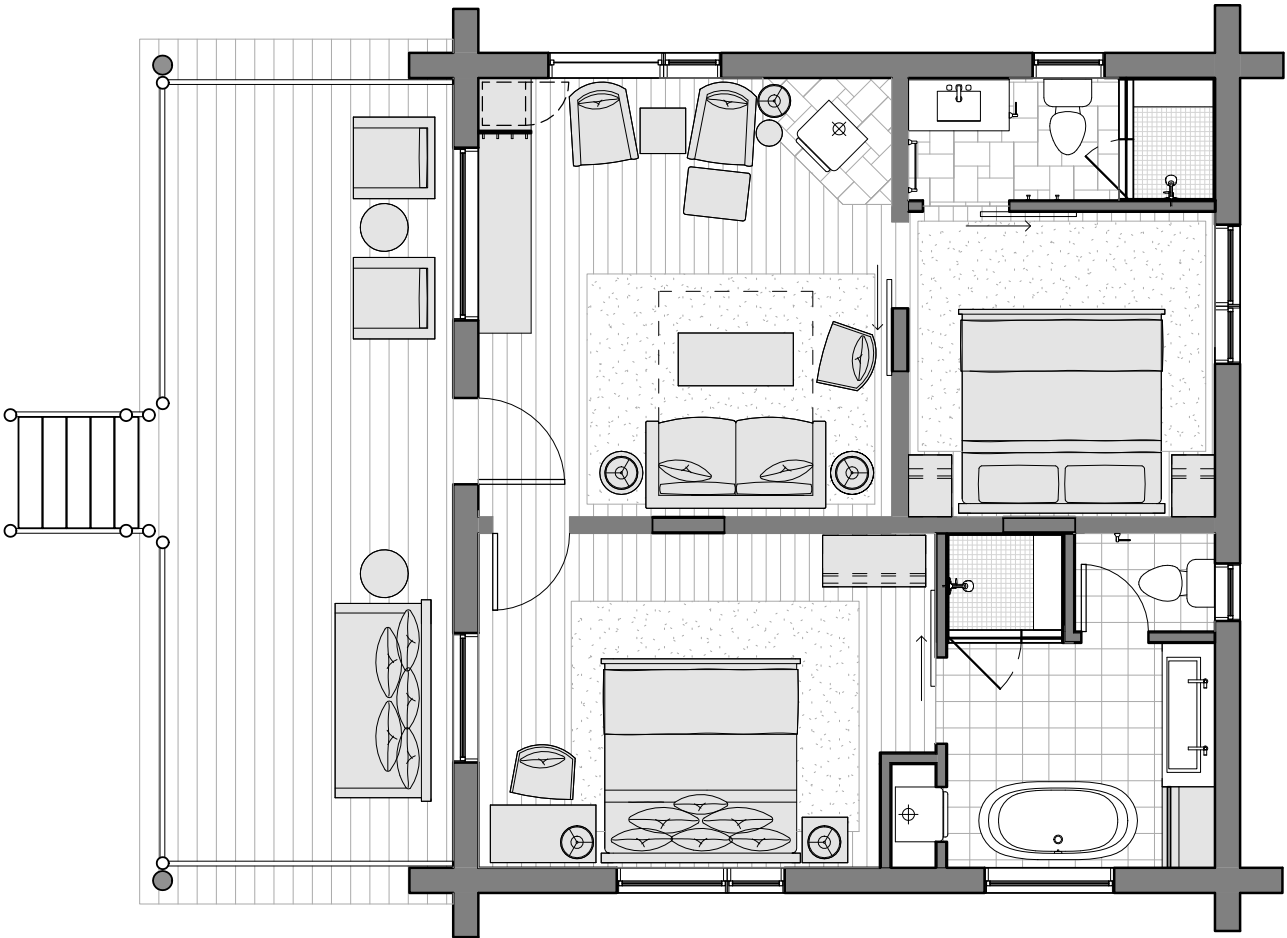


LMR CABINS: TWO BEDROOMS

# Larkspur

2 BEDROOMS | 2 BATHROOMS | SLEEPS 6

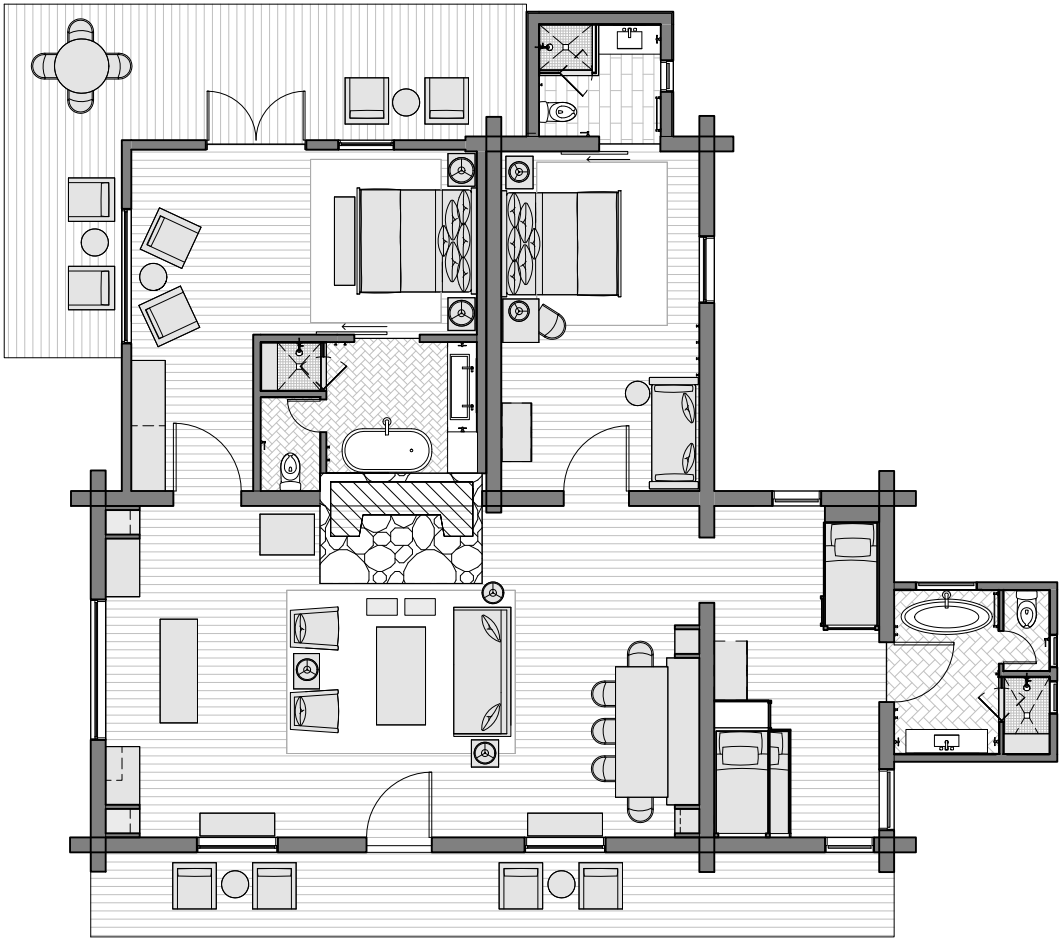
Larkspur cabin (named after a summer-blooming wildflower) features an expansive porch that’s perfect for quality family time or cozying up alone with a good book and a blanket. Inside, guests can unwind in the spacious living room nestled aside the wood stove. This cabin features two bedrooms each with a king bed and full bathroom. *The living room sofa can be made up to a bed.*



# B-K

3 BEDROOMS | 3 BATHROOMS | SLEEPS 9

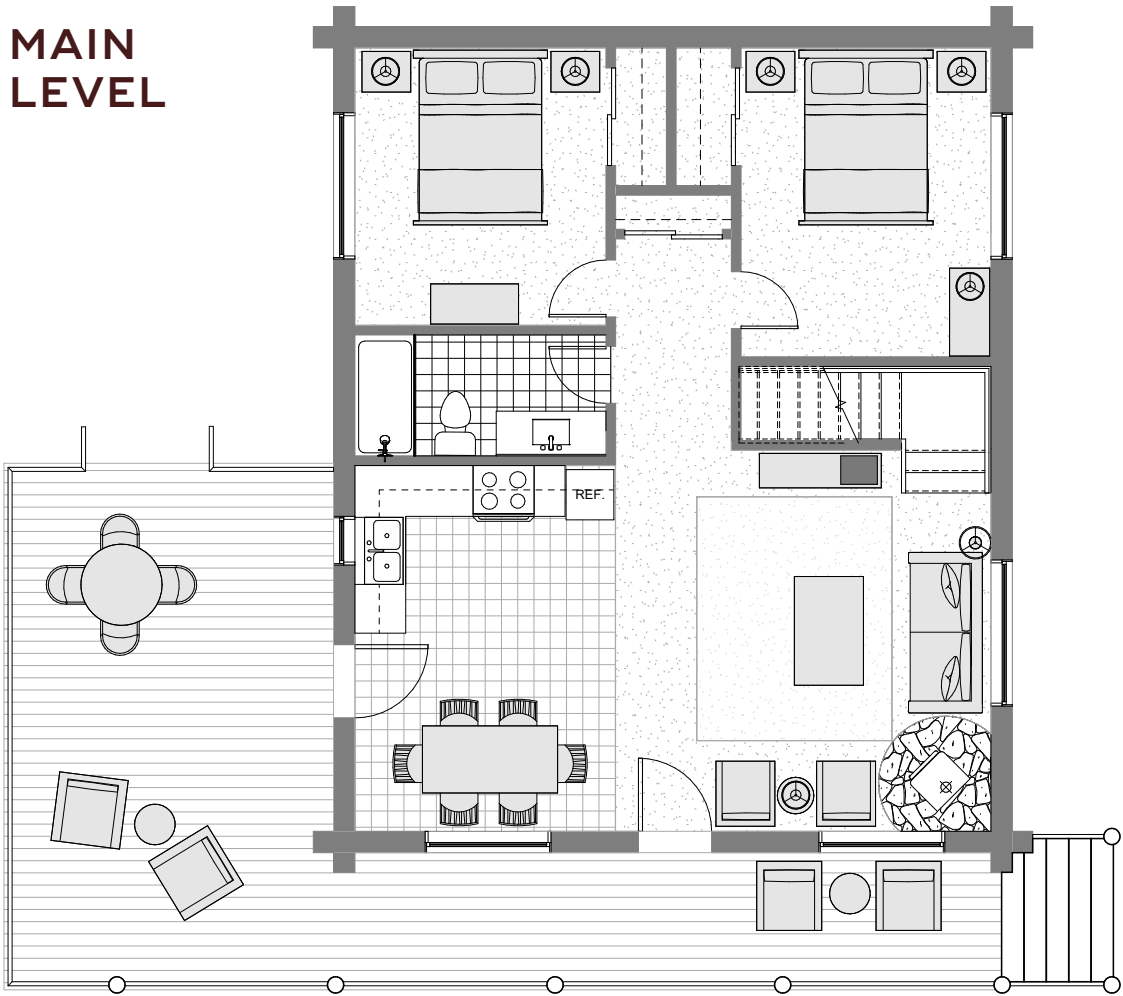
B-K (pronounced B-Bar-K) Built in 1936, B-K is one of our most historic cabins and has served many functions over the last century including use as a schoolhouse, central ranch dining room and a wellness center. This re-imagined luxurious lodge includes two private suites with king-sized beds and en-suite bathrooms, bunk room with three twin beds and a full-size bed in addition to a private bath with bathtub as well. Guests will enter into an expansive open living space with an oversized fireplace and a large dining table. Enjoy scenic views from your private wrap around porch overlooking North Fork Creek. Centrally located on the property, it is just a short walk from our restaurant and activity center.



# Douglas Fir House

4 BEDROOMS | 2 BATHROOMS | SLEEPS 10

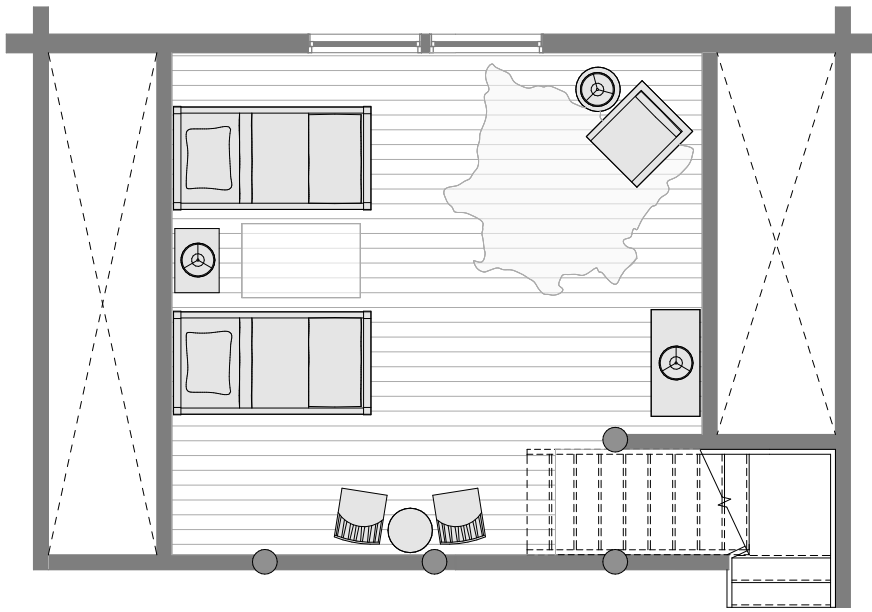
The spacious Douglas Fir House features expansive views of Lone Peak and the surrounding mountains. This lodge is a guest favorite due to its balance of convenience, function, and comfort. This cozy cabin can sleep a large family or group with 2 rooms with queen beds, a family suite downstairs with a queen and 2 twin beds, and an open loft with 2 twin beds.



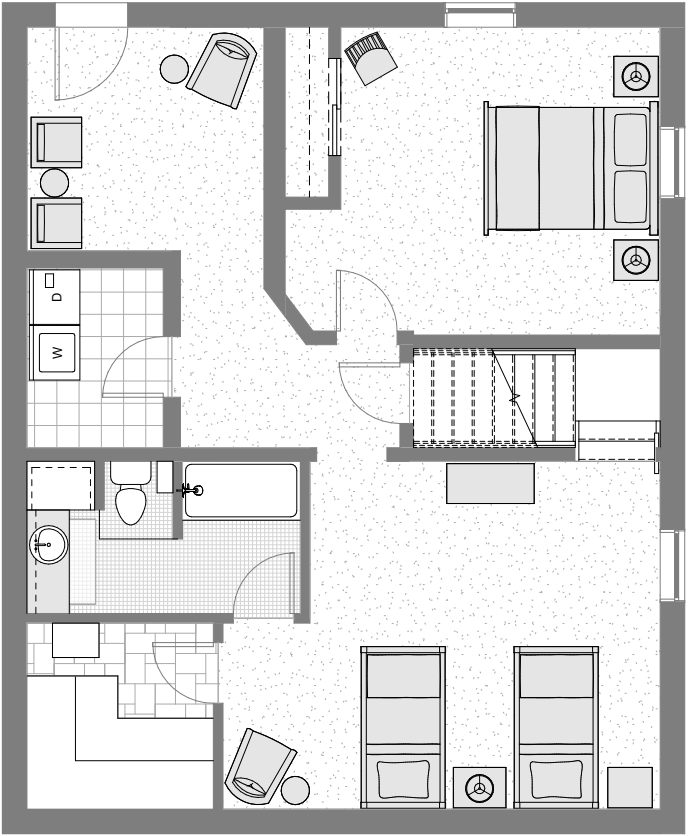
# Douglas Fir House

4 BEDROOMS | 2 BATHROOMS | SLEEPS 10

The spacious Douglas Fir House features expansive views of Lone Peak and the surrounding mountains. This lodge is a guest favorite due to its balance of convenience, function, and comfort. This cozy cabin can sleep a large family or group with 2 rooms with queen beds, a family suite downstairs with a queen and 2 twin beds, and an open loft with 2 twin beds.



LOFT



BASEMENT

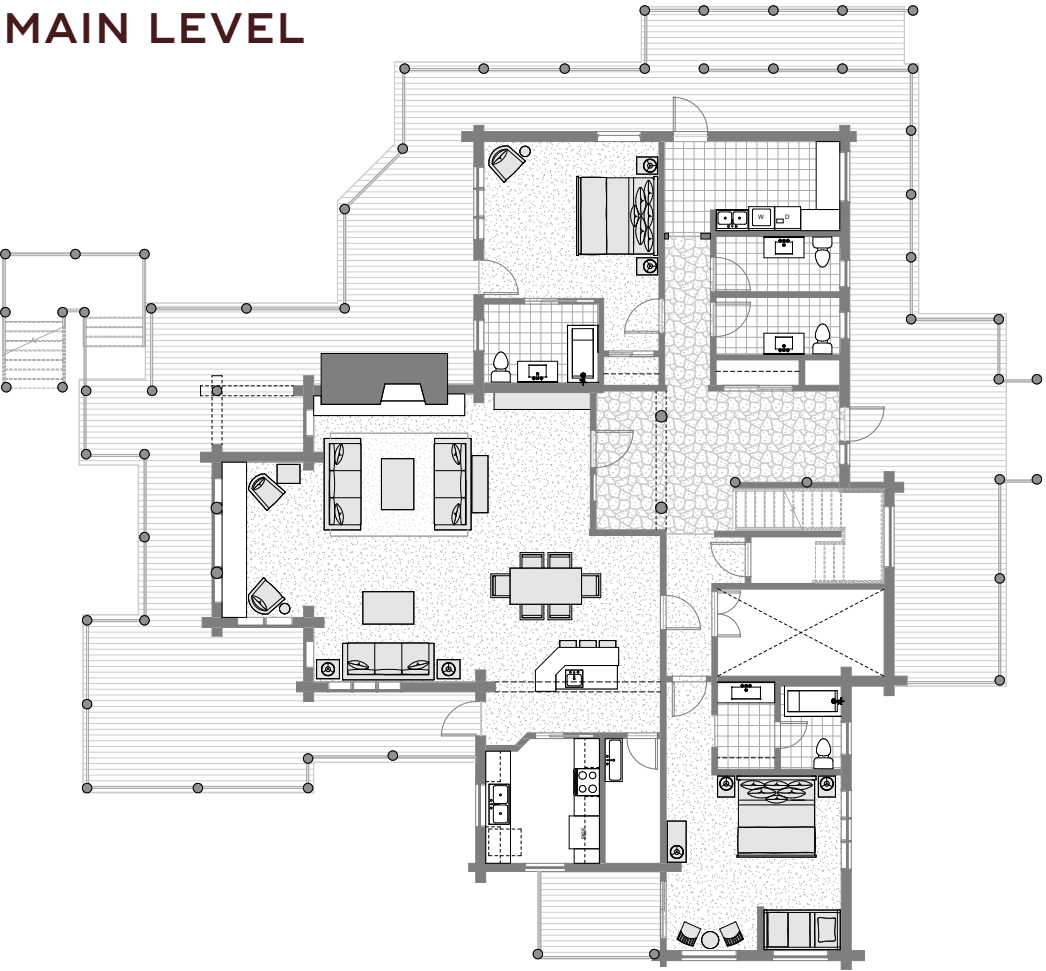


# Ridgetop Lodge

6 BEDROOMS | 8 BATHROOMS | SLEEPS 18

Ridgetop Lodge has six private bedrooms, each of which sleep up to three guests. The great room boasts a coveted view of Lone Peak, making Ridgetop ideal for corporate groups, small meetings, or family reunions. The Ridgetop Lodge also features two fireplaces, an outdoor deck, hot tub, pool table, cable tv, wifi, full kitchen, laundry, and a host of other amenities.

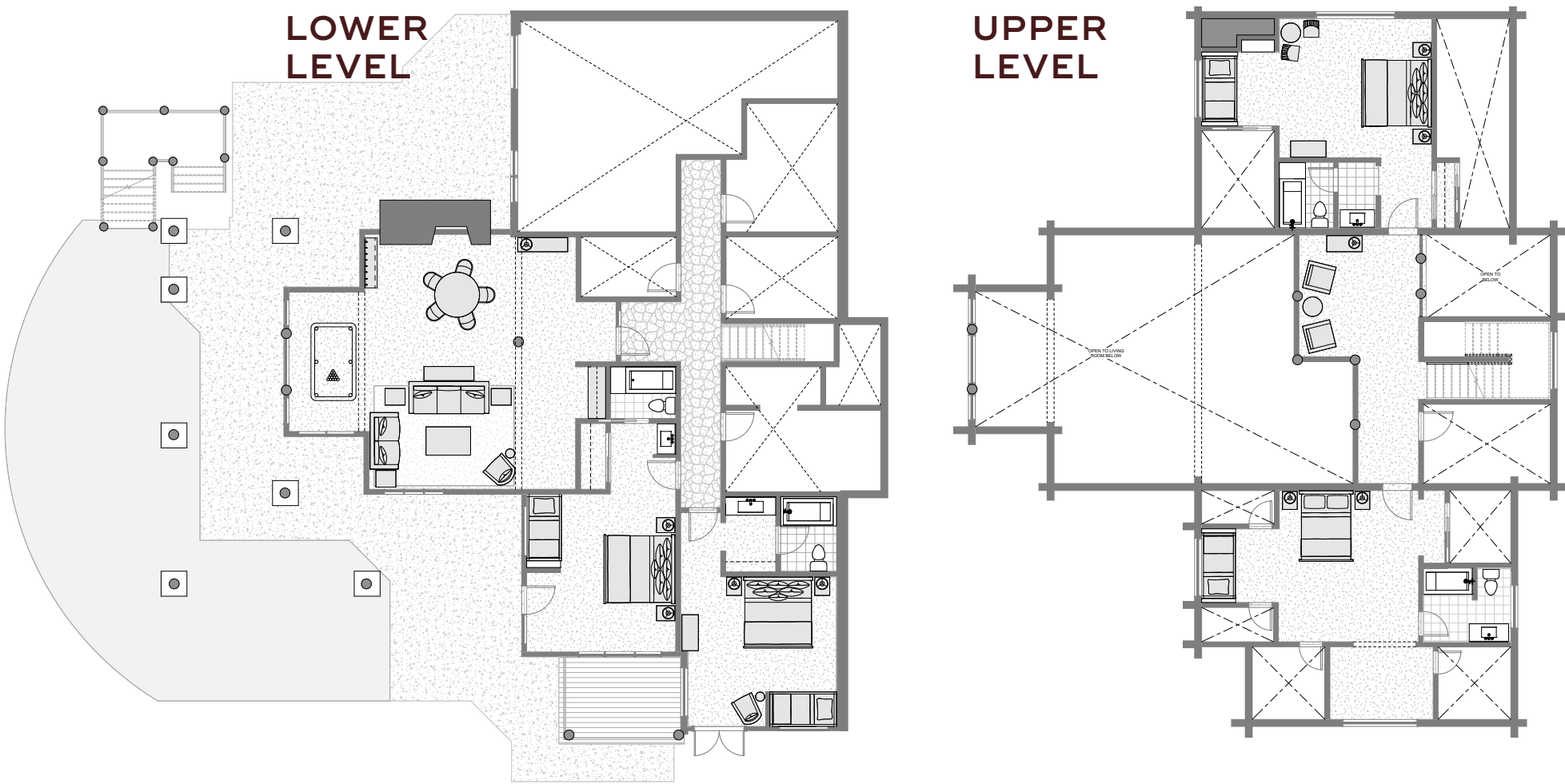
MAIN LEVEL



# Ridgetop Lodge

6 BEDROOMS | 8 BATHROOMS | SLEEPS 18

Ridgetop Lodge has six private bedrooms, each of which sleep up to three guests. The great room boasts a coveted view of Lone Peak, making Ridgetop ideal for corporate groups, small meetings, or family reunions. The Ridgetop Lodge also features two fireplaces, an outdoor deck, hot tub, pool table, cable tv, wifi, full kitchen, laundry, and a host of other amenities.





# LONE MOUNTAIN RANCH

---

BIG SKY, MONTANA

Our team is dedicated to crafting exceptional events beneath the vast Montana sky,  
ensuring every detail aligns with your vision to create an unforgettable experience.

Lone Mountain Ranch  
750 Lone Mountain Ranch Road, PO Box 160069  
Big Sky, Montana 59716

1 (406) 995 4644  
[Reservations@LoneMountainRanch.com](mailto:Reservations@LoneMountainRanch.com)